



print | copy | scan | fax

Affordable power for the busiest office



Phaser® 8550 / 8560MFP

colour printer / colour multifunction system

Choice is good, and these choices from Xerox are excellent. The Phaser 8550 printer gives your busy workgroups a colour printer that can expand from a desktop model to a four-tray, floor-standing device. The Phaser 8560MFP multifunction system adds top-of-the-line copying, scanning, and faxing. Both the printer and multifunction system are fast, reliable, easy to use, and packed with value.



Add extra trays to make a very convenient floor standing model.



A colour printer that delivers the goods

The Phaser 8550 printer meets the toughest colour-printing challenge.

- Pick up the pace with a first-page-out print time as fast as 5 seconds. Both black and white and colour print at up to 30 ppm.
- A 600 MHz processor and 256 MB of memory (upgradeable to 1 GB) provide the power you need for the most intense projects.
- Put off reloading paper, or swapping one size for another, with a combined paper-tray capacity of 625 sheets – a huge stack of paper for a device that sits on a desktop. Add a third and fourth tray to increase capacity to 1,675 sheets.
- Handy productivity printing tools are standard, not expensive extras: job accounting, automatic two-sided printing, booklet printing, and many more.



Multiple functions, no waiting

The Phaser 8560MFP will tackle your workload with an array of time-saving tools.

- Access walk-up copying, scanning, or faxing functions when you need them, even while other jobs are printing. Spend your valuable time working, not waiting for your turn.
- See the first page of your copy job in as little as 15 seconds and the first page of your print job in as little as 8 seconds. Print black and white and colour at up to 30 ppm.
- Gather all those loose paper documents and scan them straight to your desktop, to a public or private folder, or to password-protected mailboxes. Organise, edit, and distribute files with powerful onboard scanning tools.
- Start with a paper-tray capacity of 625 sheets, then add two more trays for a total of 1,675 sheets.
- An array of productivity tools for all functions is standard.



A monthly duty cycle of 85,000 pages (170 reams of paper!) guarantees long-lasting reliability and quality for your busy workgroup.



Advanced output options are available at the touch of a button.

Walk-up multifunction system operation couldn't be easier. Choose a function, then view menus on the graphic display screen.

You can also use the graphic display screen to receive alerts, troubleshoot, and change settings. Use the arrows to navigate.

Fast and efficient faxing, whether there's one recipient or many.

Outstanding colour

Both the Phaser 8550 printer and the Phaser 8560MFP multifunction system deliver precise detail and rich, vibrant colours that get noticed.

- Count on superior output on everything from card-weight stock to recycled paper. Confidently handle colour projects under your own roof and say goodbye to the lost time and extra expense of outside services.
- True Adobe® PostScript® 3™ and automatic colour-enhancement tools ensure that colour-intensive documents print reliably and accurately.

- Produce fast, versatile prints for everyday jobs. When you really want to impress, switch to 2400 FinePoint™ print resolution mode.
- Nothing else on the market can offer more consistent, vivid colour. The last page of your long day will look as good as the first.



Go ahead, get creative. Print on business card stock, invitations, transparencies, labels and more. You can expect the same brilliant output no matter what the media.





Loading ink is as easy as can be.



Easy to set up, operate and share

Simple, cartridge-free design and a no-fuss way of getting things done.

- Streamlined, automated driver and scanner installation gets you printing in minutes.
- Replenishing ink is as easy as reloading a stapler. You can even top off the ink supply without interrupting a print job. There's no mess to clean up and no bulky boxes to store.
- PrintingScout® technology monitors your print projects. If there's a potential issue, a pop-up alert will suggest a remedy.
- You can manage, configure, and monitor jobs without leaving your chair thanks to the CentreWare IS embedded Web server.
- Built-in security tools keep your data safe. Among these tools are Secure Print, which holds hard-copy output until you enter a PIN, and Hard Drive Overwrite, which "shreds" data after every job or on request.



Solid ink is environmentally friendly. It generates 1/40th the waste of a typical colour laser device.

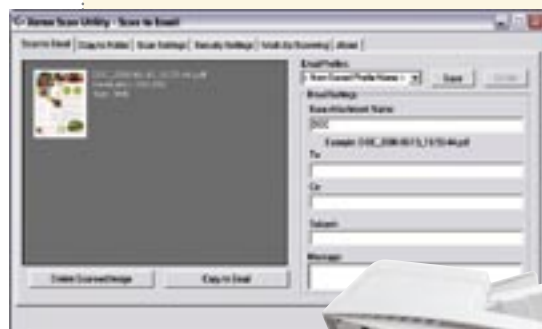
An ace up your sleeve: Scanning tools

Standard scanning functionality on the Phaser 8560MFP includes scanning at a rapid 22 ppm, network scanning, and two-sided scanning. Scan to your PC or Mac, email, mailbox, public or private folders, and other destinations.

We've included the Nuance® software bundle*. Use these award-winning solutions to transform paper clutter into digital files and integrate them into your workflow.

- Nuance® OmniPage® software quickly converts paper documents into editable and searchable digital documents with accurate page layouts and formats.
- Nuance® PaperPort® software uses a thumbnail-based Visual Desktop that lets you instantly view and organise scanned paper and formats including PDFs, TIFFs, and Microsoft Office documents.

** Standard on X configuration.*





What do both products have in common?

Solid Ink.

Easier to use than colour lasers or ink jets, solid ink delivers high performance, a low cost of ownership, and outstanding print quality.

Versatile and easy to use

PRINT

Phaser® 8550

Colour printer

- Prints black and white and colour at the same super-fast speeds
- Networked and loaded with features

COLOUR

The impact of colour
Colour attracts, clarifies, and sells. It is one of the most effective business tools available.

EASE OF USE

Easy to install, use and manage
Boost productivity with devices that make office life easier.

Phaser® 8560MFP

Sophisticated functionality

- Print, copy, scan, and fax together in one device
- Multi-tasking performance
- Advanced fax capabilities

PRINT

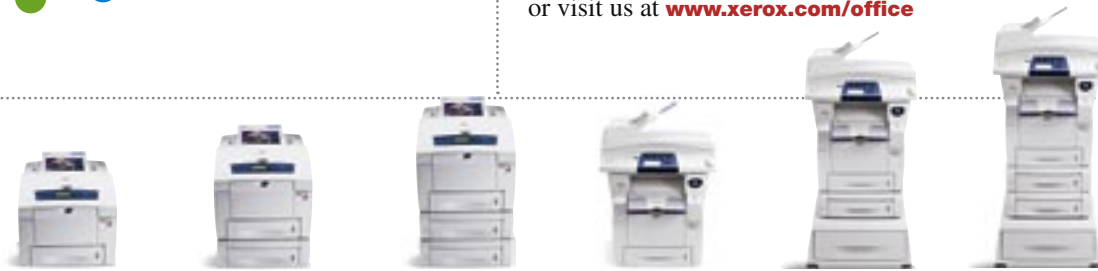
COPY

SCAN

FAX



Call today. For more information, call **00 800 9000 9090** or visit us at www.xerox.com/office



| CONFIGURATIONS | Phaser 8550DP | Phaser 8550DT | Phaser 8550DX | Phaser 8560MFP/D | Phaser 8560MFP/T | Phaser 8560MFP/X |
|---------------------------|--|----------------|--|---|------------------|------------------|
| Speed | Up to 30 ppm colour / 30 ppm black and white | | | | | |
| Duty Cycle | Up to 85,000 images / month | | | | | |
| Paper Handling | Tray 1: 100 sheets; Custom Sizes: 76 x 127 mm to 216 x 356 mm Tray 2: 525 sheets; Selectable Sizes: 176 x 250 mm to 210 x 297 mm | | | | | |
| Paper Input | NA | | | Duplex Automatic Document Feeder: 50 sheets; Size: 114 x 140 mm to 216 x 356 mm | | |
| Tray 3: 525 sheets | Optional | Standard | | Optional | Standard | |
| Tray 4: 525 sheets | Optional | | Standard | Optional | | Standard |
| Paper Output | Automatic two-sided, 250 sheets face-down output tray | | | | | |
| Copy | As fast as 15 seconds colour / 15 seconds black and white | | | | | |
| First-Page-Out Time | NA | | | As fast as 15 seconds colour / 15 seconds black and white | | |
| Copy Resolution | NA | | | 600 x 600 dpi | | |
| Copy Features | NA | | | Automatic two-sided, Book Copying, Booklet Creation, Collation, Covers, Image Center, Image Shift, N-Up, Reduce / Enlarge, Repeat Image | | |
| Print | As fast as 6 seconds colour | | | | | |
| First-Page-Out Time | As fast as 5 seconds colour | | | As fast as 6 seconds colour | | |
| Print Resolution | Up to 2400 Finepoint™ | | | | | |
| Memory (std / max) | 256 MB / 1 GB | | 512 MB / 1 GB | | 1 GB / 1 GB | |
| Processor / PDL | 600 MHz Processor / True Adobe® PostScript® 3™, PCL 5c emulation | | | | | |
| Hard Drive | Optional | Standard 20 GB | | Standard 40 GB | | |
| Connectivity | 10/100Base TX Ethernet, USB 2.0 | | | | | |
| Print Features | Automatic two-sided, Custom-Size Pages, Phaser Installer, Intelligent Ready, Embedded Web Server, PrintingScout, PhaserSMART, Usage Analysis Tool, Booklet Printing, Smart Trays, Remote Printing, Email Alerts, Job Accounting, Printer Neighborhood, Job Pipelining, Run Black | | | | | |
| | Optional | | Personal/Personal Saved/Secure/Proof/Saved Print, Print With, Extended Font Storage, Collation | | | |
| Scan | Scan to PC / Mac, Scan to Mailbox, Scan to TWAIN, Scan to Email, Scan to System Hard Drive, Scan to User Name, Scan to Public / Private Folders | | | | | |
| Scan Destinations | NA | | | Scan to PC / Mac, Scan to Mailbox, Scan to TWAIN, Scan to Email, Scan to System Hard Drive, Scan to User Name, Scan to Public / Private Folders | | |
| Nuance® software | NA | | | Optional | Standard | |
| Fax Speed | NA | | | 33.6 kbps Super G3 | | |
| Fax Features | NA | | | 200 individual – 100 group Speed Dial, Fax to Multiple Addresses | | |
| Security | NA | | | Secure Print, Hard Drive Overwrite, Colour Password Protection, Fax Security | | |
| Warranty | One-year on-site warranty* | | | | | |

*Products purchased under a "PagePack" agreement do not carry a warranty. Please refer to your service agreement for full details of your enhanced service package.

Device Management
 Xerox® CentreWare® Printer Management for Microsoft® and UNIX®, CentreWare IS Embedded Web Server, CentreWare Web Administrator, Xerox NDPS Gateway, Usage Analysis Tool

Media Handling
 Tray 1: 60 to 220 gsm
 Trays 2 – 4: 60 to 120 gsm
 Duplex Automatic Document Feeder: 60 to 120 gsm
 Media Types: transparencies, envelopes, labels, glossy paper, custom-size paper

Operating Environment
 Temperature: Non-operating: -30° to 60° C; Operating: 10° to 32° C
 Relative Humidity: Non-operating: 10% to 95%; Operating: 10% to 80%
 Sound Power Levels: Operating: 54 dBA, Standby: 33 dBA

Electrical
 110 – 120 V, 60 Hz; 220 V, 50 Hz,
 Power Consumption: Average: 230 W / Max: 1500 W; Energy Star-qualified (ES configuration)

Dimensions (WxDxH)
 Phaser 8550: 406 x 533.4 x 368 mm; Weight: 28 kg. Additional Feeder: 132 mm; Weight: 7.3 kg.
 Phaser 8560: 532 x 665 x 620 mm; Weight: 43 kg. Additional Feeder: 135 mm; Weight: 7.3 kg. Optional Cart: 500 x 670 x 360 mm

Certification
 8550: FCC Part 15, Subpart B, CSA-C222 No. 950, 73/23 EEC and 89/336/EEC CDRH, EN 55022
 8560: US FCC Class A, Canada ICES-003 Class A, EU CE Class A, UL/CSA 60950-1, EN60950-1

